

Christmas At The Cornerstone

Pittsburgh History & Landmarks Foundation
and The Cornerstone
cordially invite you to celebrate
this season of good cheer at our
Christmas reception for members on
Thursday, December 17
7:30 p.m.-9:30 p.m.
The Cornerstone, Station Square
Refreshments will be served

Holiday Season Tour



St. George Orthodox Church
3400 Dawson Street, Oakland



Rodef Shalom Congregation
4905 Fifth Avenue, Shadyside



East Liberty Presbyterian Church
Penn and Highland Malls

The months of December and January have special meaning for congregations of the Orthodox, Jewish and Christian faiths. You'll discover some of the religious traditions celebrated during these months on our Holiday Season Tour to St. George Orthodox Church, Rodef Shalom Congregation, and East Liberty Presbyterian Church.

On Saturday, December 12, our 49-passenger bus departs at 1:00 p.m. from the Old Post Office Museum. First we will visit the gold-domed St. George Orthodox Church; its congregation follows the "Julian Calendar" and celebrates Christmas in January.

During our tour of Rodef Shalom Congregation, we will learn more about the Jewish holiday season of Hanukkah. The Temple, designed in 1906 by Henry Hornbostel, is an architectural masterpiece--both inside and out.

Our tour concludes with East Liberty Presbyterian Church, dedicated in 1935 as a memorial to the mothers of Richard Beatty Mellon and his wife, Jennie King Mellon. The Gothic Church

will be decorated with traditional Christmas greens. Coffee and dessert will be served following the Church tour.

The cost of our Holiday Season Tour is \$15. Space is limited, so please make your reservations by November 30. For more information, call Judy Kirkpatrick, Tour Director of PHLF.

Pittsburgh: City of Congregations

Our 1982 calendar highlights the heritage of 15 religious congregations in the Pittsburgh area. January 1982 through December is a "calendar tour" of churches and synagogues where ethnic traditions are continued today.

The calendar includes editorial about each congregation and many color photos focusing on the architecture and art of the church and the activities of its people. Beneath the 9" x 16" feature on each congregation is a 9" x 8" monthly calendar--with room to write your daily activities.

Pittsburgh: City of Congregations is published jointly by Albert E. Deeds Associates and Pittsburgh History & Landmarks Foundation.

Christmas Exhibits in The Old Post Office Museum

Christmas has long been a favorite holiday for children. And to children living on Ridge Avenue in Old Allegheny, Christmas meant presents, family gatherings and feasts.

The charm and refinement of children in one of Pittsburgh's most prominent 19th-century neighborhoods is portrayed in the Old Post Office Museum exhibit, "A Ridge Avenue Childhood: 1850-1910." Among the display of toys, furniture and clothing is a child's china doll, miniature piano, school desk, baby book and rocking horse. A poster-size photo pictures Ridge Avenue in 1899.

Also on exhibit in the Museum's rotunda gallery is "Pittsburgh Landmarks of Yesterday and Today," presented by the Collectors Corner. The exhibit features the drawings and prints of Pittsburgh artist Charles A. Huber. Mr. Huber combines his professional talents as a project engineer for Dravo with his skill as a self-taught artist to re-create in art the landmark architecture of Pittsburgh's past and present.



Visit the Old Post Office Museum during the holiday season, Tuesday through Friday, 10:00 a.m.-4:30 p.m., Saturday and Sunday, 1:00 p.m.-4:30 p.m.

New Life for St. Mary's Church

The East Allegheny Community Council is marketing St. Mary's Church and Priory (on Lockhart, Pressley and Nash Streets) for PennDOT and hopes to see the buildings converted into an office complex. Interested developers should contact Nicholas Kyriazi, East Allegheny Community Council.

Old St. Luke's Christmas Candlelight Service

People of all ages and faiths are invited to attend Old St. Luke's Christmas candlelight service and social hour on December 20 from 4:00 p.m. to 6:00 p.m. A trio of teenage accordion players will participate in the worship service and social hour.

The historic stone church was built in 1852, and is being restored to serve as a center for ecumenical events.

"Ladies of Stone" come back to PHLF

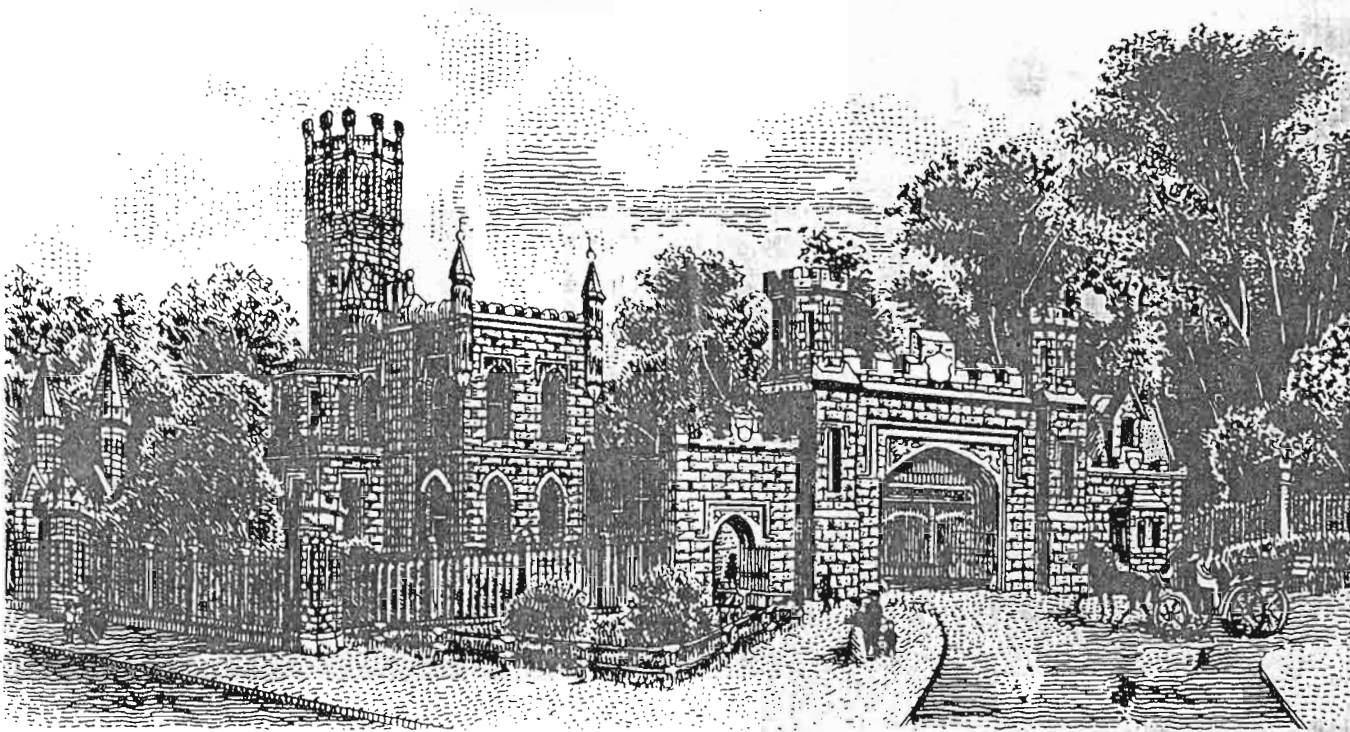
The two granite "Ladies of Stone," now marking the entrance on Grandview Avenue to the Monongahela Incline and originally located atop the Fourth Avenue Post Office on Smithfield Street, are being given back to PHLF. Recently, the statues have been damaged by vandals and by automobiles. William G. Everett and Francis G. Hurite, the current owners of the statues, want them moved to a safe place. We are delighted to accept their contribution and plan to relocate the two statues to Station Square. They will soon be in place where the Gateway Clipper boat ramp will be located.

Allegheny Cemetery Buildings to be Restored

Allegheny Cemetery has launched a new non-profit historical association to raise over \$1,000,000 to restore the great historic buildings at the cemetery.

The cemetery itself is significant, and is listed on the National Register. Following the 19th-century ideal of the rural cemetery, Allegheny Cemetery was the first park-like cemetery in the City of Pittsburgh, the fourth incorporated public cemetery in the United States, the oldest suburban cemetery west of the Allegheny Mountains, the burial place of many local and national notables, and a repository for significant examples of architecture and sculpture.

Among the buildings and monuments on the over 300 acres of the cemetery, the most outstanding are the two gatehouses. The Butler Street Gatehouse and Lodge were built of sandstone in the English Gothic manner in 1848, and designed by John Chislett, the first superintendent of Allegheny Cemetery. At the top of the cemetery, the Penn Avenue



Allegheny Cemetery Gatehouse 4734 Butler Street

Gatehouse, built in 1887 and designed by Macomb and Dull, represents a rustic Richardsonian Romanesque style of rugged masonry inlaid in patterns and arches. In addition, the notable mausoleums and monuments throughout the cemetery document the development of cemetery art from the 1840s to the present.

PHLF conducted a restoration analysis, and based on its findings, the fund raising effort was launched.

Members of the Board are active with the staff in seeking grants, contributions, and two-year pledges. To date over \$200,000 has already been given to the campaign.

We wish the cemetery association success because it is undertaking a notable preservation effort on behalf of the historic buildings of this region. Pledges to the Allegheny Cemetery Historical Restoration Program may be made for a period of up to three years.

A New Challenge for PHLF

We are proud to announce that we have received a Challenge Grant from the National Endowment for the Arts. We have pursued the grant for several years. Of 298 applications for fiscal year 1981, 84 were funded. The Challenge Grant Program is "...designed to assist high quality cultural institutions in achieving long term financial stability and independence."

The \$300,000 grant challenges us to provide a match, and our goal is to raise \$2,000,000 in addition to the grant over a three-year period. During the grant period, any new contributions or those increased over 1978 levels are applicable as part of the match.

The Challenge Grant is enabling us

to strengthen and institutionalize our existing programs and to begin new ones. We are continuing our Western Pennsylvania Museum programs, adaptive-use studies, and our work to restore the Mexican War Streets, Manchester, South Side and Phipps Conservatory; we have also begun a new neighborhood preservation training program. Our architectural survey of Allegheny County will be completed in 1983.

Our major fund raising campaign for the grant will begin later this year with the publication of our Fifteen Year Report. You will soon receive this handsome publication highlighting our progress, and a request for your help toward meeting our goals.

The contributions received will help finance the following projects:

Neighborhood Revitalization Program	\$780,000
General Fund and Endowment Needs	580,000
Station Square	330,000
Historic Buildings Development	270,000
Public Education and Special Events	180,000
Museums and Special Projects	160,000
	<u>\$2,300,000</u>

New Funding for the Allegheny County Survey

We are pleased to announce that we have received \$20,000 from the Vira I. Heinz Fund of the Pittsburgh Foundation for the Allegheny County Survey.

During the past two and a half years, we have surveyed all of the City of Pittsburgh and 44 of the other 129 municipalities in Allegheny County. Our survey team has recorded over 5,000 sites which are of neighborhood, regional, state, or national importance. Of those, over 20 districts and 180 individual sites not already designated may

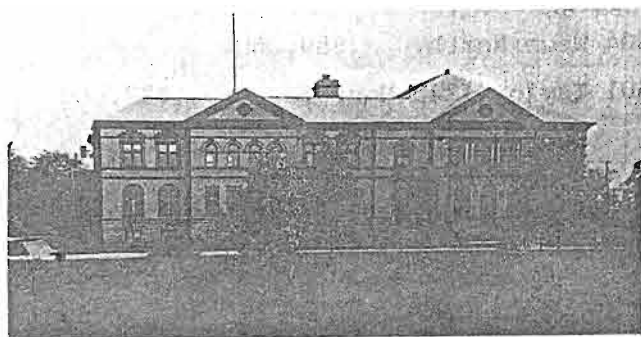
eventually be listed on the National Register, affording recognition, protection, and tax benefits. The remaining 85 municipalities will be surveyed during the remainder of 1981 and 1982.

Other funding for the survey has been provided by the Pennsylvania Historical & Museum Commission, R.K. Mellon Foundation, Allegheny County Department of Development, City of Pittsburgh, and Fisher Charitable Trust. We have yet to raise \$75,000 for completion of the project.

Andrew Carnegie Free Library on National Register

On October 8 the Andrew Carnegie Free Library was added to the National Register of Historic Places. The Beaux-Arts building was designed by Struthers and Hannah; the cornerstone was laid in 1899 and the doors opened to the public on May 1, 1901.

The Andrew Carnegie Free Library was among the first libraries donated by steel entrepreneur Andrew Carnegie --and is the only one to carry his full name. During his lifetime, Carnegie donated \$56,162,622 for the construction of 2,509 library buildings in the English-speaking world. Over 65 sites and districts in Allegheny County are recorded in the National Register.



Andrew Carnegie Free Library
300 Beechwood Avenue, Carnegie

Landmark Lookout

The Historic Plaque Designation Committee is meeting on January 13, 1982 to review applications for landmark plaques. If you have any suggestions, please contact Eliza Smith, Survey Director of PHLF, for an application form. We would like all recommendations by January 1.

The Challenge Grant works this way:

Your Gift of	\$	60
		120
		600
		1,000
		5,000

Yields NEA	20
Matching	40
Dollars	200
	333
	<u>1,666</u>

Providing	\$	80
PHLF with		160
the Total		800
		1,333
		<u>6,666</u>

Announcing A Competition

One of our prime areas of fund raising will be membership development. We want to double our membership by the end of 1982, and we will award a Grand Prize to the member whose referrals result in the most new membership dollars received from December 1, 1981 to March 31, 1982.

The best way to obtain new members is through our current members. Please use the form below to send us names of persons we may write to inviting them to join.

Grand Prize

Dinner for two at the Grand Concourse restaurant. What better way to celebrate your victory?

To enter, fill in the coupon below and attach your list of prospective members. You'll be helping us broaden our base of support as well as earning yourself a chance for a delicious meal.

PHLF SPECIAL MEMBERSHIP DRIVE COMPETITION

Member's Name _____
Address _____
City _____
State/Zip _____
Phone _____
Signature _____

I have attached a list of the names and addresses of prospective new members for Pittsburgh History & Landmarks Foundation. In contacting these friends, PHLF () may or () may not use my name, stating that I suggested that they be contacted.

Real Estate Sales News

We continue to offer some of our historic residential properties for sale. Some of these buildings are restored, some partially restored, and some awaiting restoration. In all cases, the buildings have architectural qualities and are part of one of our historic districts. We acquired these properties to help secure the neighborhood and initiate the program, but it is no longer necessary for PHLF to hold the properties and we are glad to make them available, generally below market costs. The prices are firm and do not include broker's commissions.



1330 Liverpool Street
Manchester

The 1300 block of Liverpool Street in Manchester constitutes the finest surviving Victorian street in Pittsburgh. 1330 Liverpool is a three-story row house which has been divided into two equally-sized apartments. Completely restored in 1977, the building has modern plumbing, wiring, bathroom fixtures and kitchen appliances. The exterior has been repointed and painted. Each apartment contains a living room, dining room-kitchen, two bedrooms, one bathroom and spacious storage. Much of the original interior detail work is intact. \$65,000



1219 Buena Vista
Mexican War Streets

The exterior of this handsome stone-faced three-story building has been completely restored. Restoration work in 1981 included a new roof, new thermo-pane wood-sash windows, and painting of all woodwork. The original interior remains; features include large sliding wood doors, a staircase, and marbleized-slate fireplaces. The building contains

three occupied rental units, but can be adapted to a spacious owner-occupied unit on two floors plus a third-floor rental unit. \$69,000



1238 Monterey
Mexican War Streets

This single family two and a half story house contains eight rooms, an attic and basement. The exterior has been restored, including the replacement of the roof. The original interior has not been altered through time, but requires rehabilitation or replacement of plumbing, wiring, and furnace, as well as some plaster work. \$30,000

The following houses are also for sale. Although each has its unique character, they are similar in size, detail, and condition to the three properties already highlighted.

MEXICAN WAR STREETS

408 Taylor	\$ 70,000	2 apts.
1200 Monterey	80,000	2 apts.
1220 Monterey	55,000	2 apts.
1224 Resaca	72,000	2 apts.
1233 Resaca	85,000	3 apts.
1201 Buena Vista	150,000	5 apts.
512/514 Eloise	30,000	2 apts.

In addition there are two vacant Mexican War Street buildings requiring major interior work. Their exteriors have been restored. Each offers the possibility of three rental units.

404 West North	\$89,000	
601 Taylor/1243 Monterey	\$82,000	

MANCHESTER

1137 Sheffield	\$73,000	3 apts.
1305 West North	65,000	2 apts.

Low-interest mortgage funds are available within Manchester. Call PHLF for details.

SOUTH SIDE

Commercial Property (Storefront)		
1705 E. Carson	\$90,000	3 apts.

For further information, please call David Kahley, Rental Manager of PHLF, 322-1204.

Nevin Row Condominiums



Last winter the Allegheny West Civic Council joined forces with Repal Construction Company, Inc. to develop condominium apartments in two historic row houses on North Lincoln Avenue in Allegheny West. This alliance initiated something new for Pittsburgh--a partnership between a non-profit community organization and a private sector developer.

The financial package for the Nevin Row Condominiums is a complex of public and private dollars. Funds of the non-profit Allegheny West Civic Council were used to purchase and secure the buildings until reconstruction began. Design costs came in the form of a loan from the North Side Civic Development Council. All other development costs were loaned to the Civic Council by Pittsburgh History & Landmarks Foundation. Arthur P. Ziegler, President of PHLF, said: "Our involvement is a new step because we are making money available to a vigorous neighborhood organization. PHLF is a resource. The neighborhood organization is the motivating and implementing agency."

Construction financing is through Parkvale Savings Association, and the permanent mortgages will also be held by Parkvale. Permanent mortgage money is part of the proceeds of the City of Pittsburgh's recent \$4.5 million revenue bond issue. Purchasers of Nevin Row Condominiums will get a 30 year mortgage from Parkvale at 12% interest with as little as a 5% down payment. There are no upper income limits to qualify for these mortgages. The units are priced from \$68,900 to \$78,900.

A model unit is now completed and open houses scheduled for Sundays in November from 12:30 p.m. - 4:30 p.m. For sales information about Nevin Row contact the Allegheny West Community office, 934 Western Avenue, or phone 323-8884.

A New Challenge

We are proud to announce that we have received a Challenge Grant from the National Endowment for the Arts. We have pursued the grant for several years. Of 298 applications for fiscal year 1981, 84 were funded. The Challenge Grant Program is "...designed to assist high quality cultural institutions in achieving long term financial stability and independence."

The \$300,000 grant challenges us to provide a match, and our goal is to raise \$2,000,000 in addition to the grant over a three-year period. During the grant period, any new contributions or those increased over 1978 levels are applicable as part of the match.

The Challenge Grant is enabling us to strengthen and existing programs. We are continuing vania Museum projects, studies, and our Mexican War Street Side and Phipps (also begun a new vation training tectural survey will be completed.

The contributions received will help finance the following projects:

Neighborhood Revitalization Program	\$780,000
General Fund and Endowment Needs	580,000
Station Square	330,000
Historic Buildings Development	270,000
Public Education and Special Events	180,000
Museums and Special Projects	160,000
	\$2,300,000

New Funding for the Allegheny County Survey

We are pleased to announce that we have received \$20,000 from the Vira I. Heinz Fund of the Pittsburgh Foundation for the Allegheny County Survey.

During the past two and a half years, we have surveyed all of the City of Pittsburgh and 44 of the other 129 municipalities in Allegheny County. Our survey team has recorded over 5,000 sites which are of neighborhood, regional, state, or national importance. Of those, over 20 districts and 180 individual sites not already designated may eventually be listed in the National Register, affording them protection, and tax incentives. We are currently surveying 85 municipalities during the remainder of the year. Other funding has been provided by the Historical & Museum Society, Mellon Foundation, Department of Development, Pittsburgh, and Foundation Trust. We have your support for completion of the survey.

Andrew Carnegie Free Library on National Register

On October 8 the Andrew Carnegie Free Library was added to the National Register of Historic Places. The Beaux-Arts building was designed by Struthers and Hannah; the cornerstone was laid in 1899 and the doors opened to the public on May 1, 1901.

The Andrew Carnegie Free Library was among the first libraries donated by steel entrepreneur Andrew Carnegie --and is the only one to carry his full name. During his lifetime, Carnegie donated \$56,162,622 for the construction of 2,509 library buildings in the English-speaking world. Over 65 sites and districts in Allegheny County are recorded in the National Register.



Andrew Carnegie Free Library, 300 Beechwood Avenue, Pittsburgh, PA 15212. **Landmark I**

The Historic I Committee is meeting in 1982 to review applications for landmark plaques. If you have information, please contact the Survey Director for an application form. We appreciate your recommendations by Jar

Calendar of Events

November 22	2:30 p.m. Concert Series at Calvary United Methodist Church: Mary Demyan presents Appalachian and English Folk Music
December 12	1:00 p.m. Holiday Season Tour to St. George Orthodox Church, Rodef Shalom Congregation and East Liberty Presbyterian Church
December 17	7:30 p.m. - 9:30 p.m. Christmas Reception for PHLF Members at The Cornerstone, Freight House Shops, Station Square
December 20	4:00 p.m. - 6:00 p.m. Old St. Luke's Church, Woodville: Christmas Candlelight Service and Social Hour

Publications

Famous Men and Women of Pittsburgh is the result of an outstanding and scholarly series of lectures given during the Bicentennial years of 1976-77. Sponsored by PHLF and the Pittsburgh Bicentennial Commission, the series covered some well known Pittsburghers and many others whose contributions are not well known; their accomplishments are significant to our city and to the nation. This publication celebrates their achievements in the field of art, music, medicine, literature, industry, education and science.



A committee of friends of Peter Berndtson, through PHLF, has published Organic Vision, written by Donald Miller and Aaron Sheon. The book sets forth the ideas and the architecture of the late Peter Berndtson.



Both of these books, and PHLF's 1982 Calendar, are available at the Old Post Office Museum Gift Shop (322-1204) and at The Cornerstone, Station Square (765-1042). You may also order by mail from PHLF, One Landmarks Square, Pittsburgh, PA 15212.

PLEASE SEND THE FOLLOWING:

Pittsburgh: City of Congregations

Calendar(s) @ \$6.00 + \$1.50 postage \$

Famous Men and Women of Pittsburgh

Hardbound @ \$16.95 + \$2.00 postage..... \$

Paperback @ \$ 7.95 + \$1.50 postage..... \$

Organic Vision

Paperback @ \$12.95 + \$1.50 postage \$

MY CHECK IS ENCLOSED

NAME _____

ADDRESS _____

Lecture Program Committee

Richard D. Edwards, our Acting Chairman of the Board, has appointed Mrs. Nathan Pearson, Mrs. B.F. Jones III, Mrs. George L. Craig, Jr. and Mrs. Robert Wardrop to serve on the Lecture Program Committee. PHLF's lecture series features topics on preservation and restoration, and on the history of Pittsburgh and its people. Please let us know your suggestions for speakers.

Restoration of Jones Hall



Jones Hall-- after restoration

The Community College of Allegheny County has completed restoration work on the B.F. Jones mansion, located on 808 Ridge Avenue. Restoration work began August 1980 and involved three separate projects: General Roofing Company repaired the roof structure and reslated the roof; masonry restoration including hand scrubbing and repointing was completed by J.J. Graciano Corporation; Jonpar Corporation restored the damaged ornamental stonework on the roof. The total cost of restoring the B.F. Jones mansion was \$156,320.

PHLF 1982 Tour Questionnaire

We would welcome your ideas for expanding PHLF's 1982 tour program. Please complete the following questionnaire...and add any other suggestions you may have.

Would you want to attend a:

- 3-day open house tour in May to the historic homes and buildings of Philadelphia?
YES NO
- fall tour of the James River Houses in Virginia with two nights in Williamsburg?
YES NO
- house tour of Bethlehem, PA's historic homes?
YES NO
- What new local tours would you like us to offer in 1982?

Please return your completed questionnaire to Judy Kirkpatrick, Tour Director of PHLF.

its, but can
owner-
ors plus a
\$69,000

Monterey
an War Streets
o and a half
ht rooms, an
e exterior
ding the

The original
tered through
ilitation or
wiring, and
plaster

are also for
its unique
lar in size,
the three
ighted.

0,000	2 apts.
0,000	2 apts.
5,000	2 apts.
2,000	2 apts.
5,000	3 apts.
0,000	5 apts.
0,000	2 apts.

o vacant
ings
work.
n re-
possi-
nits.
000
\$82,000

000	3 apts.
000	2 apts.

funds are
ter. Call

refront)
000 3 apts.

ion, please
al Manager of

Nevin Row Condominiums



Last winter the Allegheny West Civic Council joined forces with Repal Construction Company, Inc. to develop condominium apartments in two historic row houses on North Lincoln Avenue in Allegheny West. This alliance initiated something new for Pittsburgh--a partnership between a non-profit community organization and a private sector developer.

The financial package for the Nevin Row Condominiums is a complex of public and private dollars. Funds of the non-profit Allegheny West Civic Council were used to purchase and secure the buildings until reconstruction began. Design costs came in the form of a loan from the North Side Civic Development Council. All other development costs were loaned to the Civic Council by Pittsburgh History & Landmarks Foundation. Arthur P. Ziegler, President of PHLF, said: "Our involvement is a new step because we are making money available to a vigorous neighborhood organization. PHLF is a resource. The neighborhood organization is the motivating and implementing agency."

Construction financing is through Parkvale Savings Association, and the permanent mortgages will also be held by Parkvale. Permanent mortgage money is part of the proceeds of the City of Pittsburgh's recent \$4.5 million revenue bond issue. Purchasers of Nevin Row Condominiums will get a 30 year mortgage from Parkvale at 12% interest with as little as a 5% down payment. There are no upper income limits to qualify for these mortgages. The units are priced from \$68,900 to \$78,900.

A model unit is now completed and open houses scheduled for Sundays in November from 12:30 p.m. - 4:30 p.m. For sales information about Nevin Row contact the Allegheny West Community office, 934 Western Avenue, or phone 323-8884.