

# PH LF NEWS

Pittsburgh History & Landmarks Foundation

Old Post Office • Allegheny Square West • Pittsburgh, Pa. 15212  
Phone 322-1204

NUMBER 77

SEPTEMBER 1980

NON PROFIT ORG  
U. S. Postage  
PAID  
Pittsburgh, Pa.  
Permit No. 598

## PITTSBURGH HISTORY & LANDMARKS FOUNDATION

# Antiques Show

October 17, 18, 19, 1980

at

### STATION SQUARE

Smithfield St. Bridge and E. Carson St.

Admission \$3.00

Friday and Saturday: one to 10:00 p.m. Sunday: one to six p.m. Luncheon Available

*A partial listing of dealers*

Felicia Allman  
Glen Mills, Pa.  
Bette M. Apt  
Pittsburgh, Pa.  
Robert and Cynthia Baker  
Niles, Michigan  
Brandagee Antiques, Inc.  
Pittsburgh, Pa.  
Allan Brink  
Unionville, Ohio  
Century Antiques  
Bridgeport, W. Va.  
Chadbourne Terrace Antiques  
Wilmington, Del.  
Peter Chillingworth  
Scenery Hill, Pa.  
Vivian Wilson Cohen  
Arlington, Va.  
The Country Squires  
Sewickley, Pa.  
Ron Cousin  
Ulrich, N.Y.  
The Crow's Nest  
New Brighton, Pa.

The Cunninghams  
Denver, Pa.  
Sally Ann Decker  
Morgantown, W. Va.  
Duxbury Galleries  
Duxbury, Mass.  
East End Galleries  
Pittsburgh, Pa.  
Robert H. Eckhardt  
Pittsburgh, Pa.  
Fischer and Strassler  
Pittsburgh, Pa.  
Betty Gaines  
Alexandria, Va.  
Fred Hanson  
Keedysville, Md.  
Billie Gale Hoskins  
Wheeling, W. Va.  
Joint Venture  
North Norwich, N.Y.  
King Philip Antiques  
Wrentham, Mass.  
Kinzie Galleries  
Duncansville, Pa.

Knapp and Farley  
Hudson, Ohio  
William C. Mayer, Jr.  
Pittsburgh, Pa.  
Charles and Grete Miller  
Canonsburg, Pa.  
Margaret Mutschler  
Ecclesdale, Pa.  
Marshy Hope  
Taylor's Island, Md.  
Pheasant Hill Antiques  
West Chester, Pa.  
Paul and Betty Phillips  
Monkton, Md.  
Piper's Antiques  
Jefferson, Ohio  
Ellen Roberts Antiques  
Bethesda, Md.  
Manuel and Leonore Saul  
Washington, Pa.  
Shehady's Oriental Rugs  
Pittsburgh, Pa.  
Pamela Sprong  
Fayetteville, N.Y.

Woody P. Straub  
Harmony, Pa.  
The Tail End  
Pittsburgh, Pa.  
Tillou Galleries  
Buffalo, N.Y.  
The Tinker's Dam  
Mt. Vernon, Ohio  
Towpath Antiques  
Lyons, N.Y.  
The Treen Shop  
Zelienople, Pa.  
John Veenschoten Gallery  
Erie, Pa.  
Walker Valley Antiques  
New York, N.Y.  
William and Carol Warfel  
Manheim, Pa.  
Betty Wyatt Antiques  
Bridgeport, W. Va.  
Yankee Maid Antiques  
Wallingford, Vt.

Manager: Jack Squires  
412/322-1204



# Where Have All The Waters Gone?

On a recent damp Sunday evening I had occasion to be strolling along the central pathway of the west park section of the Allegheny Commons in Old Allegheny. I was watching a dog for a friend and had delayed his evening walk until a rainstorm had thoroughly passed on and the pavement was drying out although the trees still hung moist: it was a time for reflection, the end of the week end, the end of August, the end of a storm.

This particular path runs south-north and is emphasized by the great white brick tower of Allegheny General Hospital, illuminated handsomely at its crowning be-columned uppermost stories. But earlier this path had faced handsomely toward a great fountain that stood at its intersection with the east-west path that leads all the way along North Avenue to Lake Elizabeth. There, splashing handsomely no doubt as the Allegheny Hospital tower was being erected in 1928-36, the fountain, as designed by Grant and Mitchell in 1869, announced the elegance of the planning of the Commons.

Just this week a staff member attended a meeting at which a different announcement was made: a model for a contemporary sculpture, locally designed, was being unveiled for possible erection there. It is not for us to comment critically on the sculpture. In fact the Director of Parks for the City indicated that it was for the "neighborhood" to decide, a swift deference by the City to Neighborhood Power neatly eliminating a hot potato for itself. The only requirement of the City for the sculpture is that no water be involved because the City cannot maintain water free of depredations of vandals who insist on using all such pools as places to toss litter, dunk park benches, and destroy plumbing.

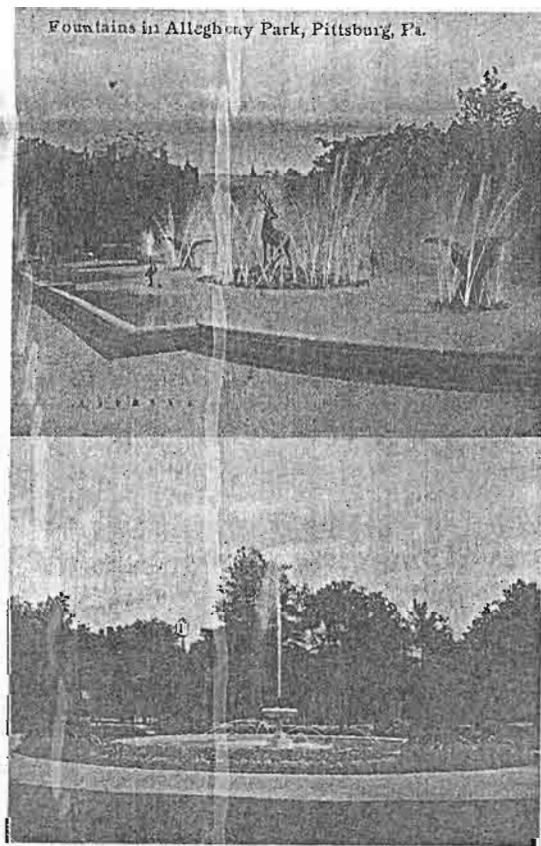
I was struck, however, by our staff member's reminder at the meeting that once a fountain had existed there, that indeed the paths still honor a circle of grass and weeds that mark the spot. The sculptor did not know that. He has not questioned why that strange round detour of asphalt should exist; he has asked nothing about the past of the park he seeks to ornament.

It reminded me of another sculpture adjacent to the Commons, the Reading Workman that had stood outside of the Carnegie Library before that building was "improved" several years ago. After the work was done, the City commissioned a local architect to place the Workman once again outside the library, which the architect did, floating him on a little elevated concrete pad in the yard. But originally, the workman sat reading amidst an extensive backdrop of handsome marble and bronze; he was located on a busy corner inviting others to join him for a time on a marble bench that he ornamented. When our Mr. Van Trump asked of the architect why the remainder of the sculpture was not included in this resurrection, the architect replied that he did not know that other pieces had existed, only the Workman himself. Again, no curiosity about even the past of the very sculpture one is bringing back to life.

Of course in only a few more months the Allegheny General Hospital Building will become part of the forgotten years because it will be brought down to be replaced by a long metal faced structure of,

vaguely, the high technology school; it is being erected in such a location that much of the green hill of Fineview will be blocked from view from the park, hidden behind an elongated metal high-rise with slit windows. The demolition appears to be necessary. We looked into the matter and found that federal regulations on hospital room sizes coupled with advances in medical technology did result in outdating the old building (all of 44 years old) and that it could not prudently be made to serve any longer.

But one remembers other losses of the Commons that we now must assume that even the more sensitive among us either never knew or are not curious about, and I refer not to such ancient memorials as fountains from the turn-of-the-century which punctuated many significant crossings in the Commons.



I think rather about how the great Memorial pylon was removed from Monument Hill—thus denuded of the monument but retaining the irony of the name—and re-established at Lake Elizabeth; also the Lake itself in its pre-1930 soft-lined version with the grass meeting the water, and its 1960 sharp edged revival in concrete. How about the bronze fish fountain near the statue of George Washington behind the Aviary, carried off in the night a few years ago, and replaced by one that parks workmen may have assiduously fash-

ioned out of old tin in the garage, meant perhaps to temporarily improvise while we await a commission for a new one.

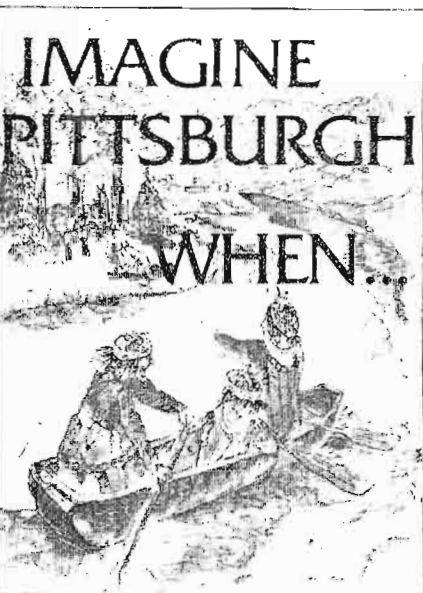
Or in the area in front of the Library where once the Workman sat reading, a pool was installed as a part of the Allegheny Center plan whose duty was to reflect the great stone tower of the library in the water for all those looking down from the surrounding buildings and for pedestrians walking nearby. Its mission was promptly forgotten and sculpture was commissioned, completed, and implanted at first in the water where it clogged the view of the reflected tower, and later, when the vandals triumphed and the water was drained out for what I assume will be forever, to stand in this shallow abyss alone. And now even the central fountain of Allegheny Center's public square seldom plays, the newest and last in a sorry procession of North Side fountains. (The only bright spot is that the Man, Birds and Beast Fountain, many years removed from the Commons and languishing in the yard behind the Aviary, has been re-erected and the waters run, but alas not in Old Allegheny but in

Market Square, where it services the pigeons if not memory.)

As I walked along that early autumn night, I noticed that even the trees in the Commons are failing, the elm blight and other pestilences are taking their toll and only a few wisps have replaced them. I suppose the entire park could be emptied of trees over the next few years, and even that forested Commons will be submerged in this swift oblivion of public memory of our very recent past.

Arthur Ziegler





We are pleased to announce the release of a new publication for children and adults alike, **IMAGINE PITTSBURGH WHEN...** A joint project of Conservation Consultants and PHLF, the book was written by Joseph B.C. White. Funding from PHLF, the Pittsburgh Bicentennial Commission, and the Child Health Association of Sewickley made the book possible.

It is an interesting combination of history, pictorial History, and workshop games for the whole family to enjoy. The lively illustrations by Susan Gaca

give the reader a good idea of what life was like in Pittsburgh in earlier times.

The book is available at the Old Post Office Museum and at the Cornerstone at Station Square. It's a perfect gift!

## River Regatta Notes

The River Regatta held August 4-10, was a great success. With many new events and the exciting "Anything That Floats Contest", the week's festivities were enjoyed by all.

At Station Square, we had a wonderful sailboat display in the Freight House Shops, booths by restoration groups and specialty food vendors in Bessemer Court, and a Clam Bake by the Grand Concourse at trackside. Thanks to all who participated!

## Summer Notes from Meadowcroft Village Corn Husk Festival Yet To Come

Meadowcroft Village has been lively this summer with two special events: The Concert on the Green and American Heritage Day.

The Concert on the Green was held July 19-20, a whole weekend of traditional American music, dancing, story telling, hand clapping, toe tapping and fun. Saturday featured Charlie Monticello and his Mountain Express as well as George Balderose and The Thompson Highland Dancers. On Sunday the Village hosted the popular group, Devilish Merry and the great dancing troupe, the Coal Country Cloggers.

American Heritage Day on September 7 was lively, with performances and battles by the Royal American Regiment. The sounds of muskets, cannon, fifes and drums filled the air.

Don't miss the Corn Husk Festival, October 11-12 with crafts, corn shucking contests, music, great food and more. For more information call Meadowcroft Village at 587-3412.

PHLF members may use the pass printed here for free admission for one adult with one paying adult. If you can't make the Corn Husk Festival, take your family or friends and visit Meadowcroft during the beautiful fall season!

The Meadowcroft Village raffle is over, and we have a winner. In fact, we have more than one! The 1930 Model A Ford Station Wagon given by Delvin Miller was finally awarded on Adios Day, August 9, at The Meadows. Ed Mahar of Florida was the lucky winner of the historic automobile. Two additional prizes were given by Delvin Miller \$1,000 cash won by Mario Intino of Clayville, NY; and \$500. cash won by Eileen McCullough of Meadow Lands, PA. Mr. Miller's generosity was greatly appreciated by Meadowcroft Village and the winners of the additional prizes.

Jerry Smith, owner of Storm Damage, the horse who won the Adios race, then donated three additional prizes of \$100. each. They were won by Art Boone of Akron, OH; Andy Kuzlinski of Clarksville, PA; and Jim Cunningham of Pittsburgh.

**FREE PASS !!**

ADMIT ONE FREE WITH ONE  
PAID ADULT ADMISSION .....

**MEADOWCROFT VILLAGE**

Aveila, Pennsylvania 15312  
587-3412

OPEN May 1 - October 31  
Wed. - Sat. 1000 - 600  
Sunday 100 - 600  
Adults \$3 Children \$1.50  
Group Rates Available

On Friday the 13th of June, Mr. Van Trump represented the Foundation at the dedication of the Jennie King Mellon Gardens which were once a part of the R. B. Mellon estate at 6500 Fifth Avenue in the East End, and which is now included in Mellon Park. In 1979, the Garden Club of Allegheny County (the local component of the Garden Club of America), received a grant of \$63,500 from the Richard King Mellon Foundation, through the good offices of Mrs. Peter Burrell to renovate and partially replant the terraced gardens on the Beechwood Boulevard side of the 44 acre Mellon Park.

The project was implemented by the Pittsburgh Civic Garden Center who will be charged also with the maintenance of the Garden. along with the Park Department of the City. The firm of Seay and Ridenour were the design consultants.

Among those taking part in the dedication were George Tabor, Director of the Richard King Mellon Foundation, Mrs. Jane Treherne-Thomas, President of the Garden Club of Allegheny County (who read a brief history of the project) and Mrs. J.C. Whetzel, Jr., who is chairperson of the Civic and Conservation Committees of both the Club and the Center. A plaque was unveiled designating the area as the Jennie King Mellon Gardens.

The bi-level gardens with their sweeping steps and high brick walls designed by Alden and Harlow were first laid out in 1911-12 as a part of the estate of Richard Beatty Mellon and his wife Jennie King. Their large brownstone house was demolished in 1940 and the estate itself was deeded to the City in 1942 by Richard King Mellon and Sarah Mellon Scaife in memory of their parents.

The restoration which is now complete, included the reinforcement of the brick retaining walls, renovation of the balustrades above them, reworking of the brick walkways and other details and a major re-planting of the upper section with winter hardy materials geared to low maintenance.

Mr. Van Trump has been working on a history of the Mellon house and garden, and the metamorphosis of the estate into Mellon Park.

**GRANTS & AWARDS**

**STATION SQUARE PRESERVATION PROGRAM**

*A Boost for Historic Preservation In Allegheny County*

---

**STATION SQUARE'S**

**SMALL PRESERVATION GRANTS**

**PRESERVATIONIST OF THE MONTH AWARD**

Station Square is sponsoring two programs to promote historic preservation in Allegheny County

**Small Preservation Grants Program**

Grants ranging from \$50.00 to \$200.00 are available to neighborhood, preservation, and historical groups for specific preservation projects.

Just write a letter describing your project and send it to the address at the bottom of the flyer.

---

**Preservationist of the Month Award**

Each month Station Square will offer a special prize to the person who has contributed to historic preservation in his or her community.

Prizes include:

- Dinner series at the Grand Concourse
- Gift Certificates for the Freight House Shops and Restaurants

Just send us a letter describing your nomination for "Preservationist of the Month" to:

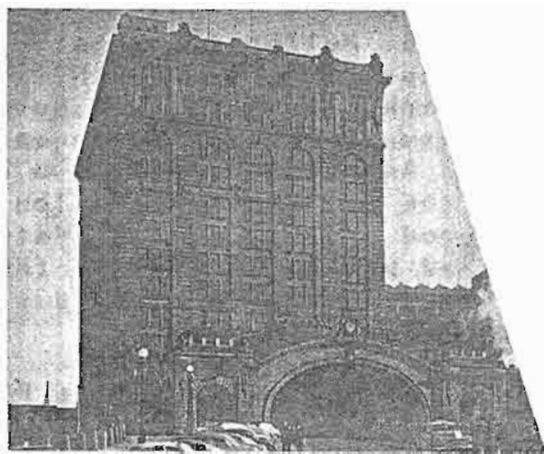
Station Square Preservation Awards  
One Landmarks Square  
Pittsburgh, PA 15212

For more information: call 322-1204

**STATION SQUARE**



# What About Penn Central?



The Pennsylvania Railroad Station remains a matter of great preservation concern to us and to many members of the Pittsburgh community, and it remains a planning concern for the City of Pittsburgh. Currently the building is owned by Conrail and is vacant. The Amtrack passenger terminal has been relocated behind the main terminal building.

For the Federal Railways Administration, the Allegheny Conference on Community Development, the Port Authority of Allegheny County, and the City of Pittsburgh Planning Department we have completed a study on the use of the building as an intermodal transportation and cultural center. Our findings for that use were generally negative.

We extended that study to examine the building for many other alternative purposes and acting on those findings, we sought to protect the building by offering to acquire or lease the building from Conrail. Our offer was submitted many months ago, but was rejected by Conrail which chose instead first to sell the building to a person who announced that he was going to strip the interior and sell the artifacts. The Mayor's office, PHLF, and Conrail opposed that effort; the buyer never produced the money so the deal never closed. Other offers have been made to buy it, but have not been acceptable to Conrail. A number of interested buyers wanted to convert the building to a hotel but the City has opposed that effort because they would like their Convention Center Hotel across the street to be built first.

Several months ago Conrail solicited public bids on the building but to date has made no announcement regarding the receipt or the disposition of those bids.

PHLF remains deeply concerned about the building. Listed on the National Register of Historic Places, it has certain protections under the law and we intend that they are enforced. Developers will not be able to demolish the building using any federal money in the process because they will not enjoy certain tax benefits if they do. Restoration, if federal money is involved or if accelerated depreciation is desired by the developer, must be meticulous.

In the meantime both the building and even more importantly the Rotunda deteriorate at a steady pace. Alarmed at the condition of the Rotunda over a decade ago, we attempted to interest the Pennsylvania Railroad in repairing it, and our studies since show that it is now severely endangered by the leaks in the roof and the deteriorating gutters and downspouts.

We expect the Pennsylvania Railroad Building to be one of our major preservation concerns- if not a crisis- in 1980.

## Old Post Office Receives Grant

The Old Post Office Museum recently received a grant of \$12,500 from the Institute of Museum Services, a Federal agency in the Department of Education.

A general operating support grant, it is the most valuable kind we can receive, since we can apply it at our own discretion towards our basic services--exhibitions, education, outreach programs, conservation, and security.

Out of 1,500 applications, only 405 were funded.

## PHLF Salute to Pittsburgh Industries

What do you know about the history of the great industries and corporations of Pittsburgh? Why are they so great? and what part have they played in making Pittsburgh great?

On October 6th at 8 p.m. in the newly restored rotunda gallery of the Old Post Office Museum, we are beginning a new series of exhibits, film presentations and lectures that should answer these questions. The series is called "Pittsburgh History & Landmarks Foundation's Salute to Pittsburgh's Industries".

The first company to be featured in the series will be the Duquesne Light Company which is celebrating its 100th Anniversary. William Roy of Duquesne Light will present the centennial celebration film, Pittsburgh An American Industrial City and answer any questions that you may have.

Come see and hear the story of Duquesne Light Company's 100 years and join us in our Salute to Pittsburgh's Industries. After the lecture you may preview the historical exhibit and join us for a reception in the Lower Galleries. Members free; non-members \$2.00.

## Allegheny Cemetery Study



In June, the Building Restoration Department of PHLF completed a study of the major structures of the Allegheny Cemetery in Lawrenceville. The study, commissioned by the Cemetery Board of Trustees, involved a detailed investigation of each building including structural analysis, energy efficiency and exterior restoration. A total of 14 buildings were examined including the gatehouse complexes at the Penn Avenue and Butler Street entrances. (Pictured is the Butler Street entrance)

The 57-page final report includes detailed descriptions of each building: present condition, recommendations for improvement and restoration, estimated costs for the recommended work, and suggested priorities. Cemetery officials were very pleased with the final report.

## Warehouse Donated to PHLF

We are pleased to announce that Second Federal Savings & Loan Association has donated a four-story vacant warehouse located near the West End Bridge to PHLF. The gift of the building is accompanied by a cash gift of \$10,000 to enable us to make repairs and pay the taxes for the next several years if we wish to keep this structure.

We will now evaluate the potential usefulness of the building for storage space or for rental. The building does not have architectural value although it is a turn-of-the-century structure. We will be determining whether we wish to retain it and use it, rent it, or sell it. We thank the officers of Second Federal Savings & Loan Association and its Board of Directors for this generous consideration.

# PHLF NEWS & NOTES

We thank the Navarro Corporation for donating a flag for the Old Post Office Museum. In a recent PHLF NEWS we put out a request for a new flag to fly on the pole that is on the front of the Museum, a very prominent place. Shortly thereafter, the Navarro Corporation, general contractors, located in Pittsburgh, donated the flag.

\* \* \* \* \*

The Three Rivers Chapter of the National Society of Colonial Dames presented its Pennsylvania State Award to Charles C. Arensberg for his service to PHLF.

\* \* \* \* \*

Charlotte Lane of Washington County History & Landmarks Foundation, Stanley Lowe of the Manchester Citizens Corporation, and Ellis Schmidlapp of PHLF have all been named to the new State Historic Preservation Advisory Board.

\* \* \* \* \*

Arthur P. Ziegler, Jr. has been named a Commissioner of the Pennsylvania Historical & Museum Commission, and also elected Chairman of Preservation Action.

\* \* \* \* \*

Anyone wishing to exhibit collections in the Old Post Office Museum's Collector's Corner, is asked to contact Greg Weidner at 322-1204.

\* \* \* \* \*

Volunteers are needed for selling tickets, taking tickets, passing out programs, booth-sitting, and "manning" the door prize table for our Antiques Show again this year. Please contact Mrs. Emerick at 322-1204. We also have need of persons to help before and after the show with the unloading and re-loading of the dealer's antiques.

\* \* \* \* \*

On Sunday afternoon, 29 June the Foundation unveiled one of its bronze historic landmark plaques at the 78 year old Carnegie Free Library of McKeesport. Mr. Van Trump who presented the plaque to Mrs. Lewis J. Nescott, also spoke at the 75th Anniversary celebration of the Library in 1977.

## SURVEY 1980

The pace of the Allegheny County Survey continues to quicken! In the first year of the project, we recorded over 2200 sites in the City of Pittsburgh alone. As we move out into the County, we are visiting one municipality per week.

PHLF wants to thank all those members who have donated their time and expertise to the project. If you haven't; join us today! Call Eliza Smith at 322-1204.



The entire length of the nineteenth century commercial district along East Ohio Street on the North Side was recorded by PHLF volunteers.

## Historic Property For Sale

Historic 1835-40 2 story brick Colonial situated on 1.3 acres, well maintained commercial, good condition located in Kennedy twp. Owners moving, asking \$70,000. Call 331-7869 for details.



On Friday the 13th of June, Mr. Van Trump represented the Foundation at the dedication of the Jennie King Mellon Gardens which were once a part of the R. B. Mellon estate at 6500 Fifth Avenue in the East End, and which is now included in Mellon Park. In 1979, the Garden Club of Allegheny County (the local component of the Garden Club of America), received a grant of \$63,500 from the Richard King Mellon Foundation, through the good offices of Mrs. Peter Burrell to renovate and partially replant the terraced gardens on the Beechwood Boulevard side of the 44 acre Mellon Park.

The project was implemented by the Pittsburgh Civic Garden Center who will be charged also with the maintenance of the Garden, along with the Park Department of the City. The firm of Seay and Ridenour were the design consultants.

Among those taking part in the dedication were George Tabor, Director of the Richard King Mellon Foundation, Mrs. Jane Treherne-Thomas, President of the Garden Club of Allegheny County (who read a brief history of the project) and Mrs. J.C. Whetzel, Jr., who is chairperson of the Civic and Conservation Committees of both the Club and the Center. A plaque was unveiled designating the area as the Jennie King Mellon Gardens.

The bi-level gardens with their sweeping steps and high brick walls designed by Alden and Harlow were first laid out in 1911-12 as a part of the estate of Richard Beatty Mellon and his wife Jennie King. Their large brownstone house was demolished in 1940 and the estate itself was deeded to the City in 1942 by Richard King Mellon and Sarah Mellon Scaife in memory of their parents.

The restoration which is now complete, included the reinforcement of the brick retaining walls, renovation of the balustrades above them, reworking of the brick walkways and other details and a major re-planting of the upper section with winter hardy materials geared to low maintenance.

Mr. Van Trump has been working on a history of the Mellon house and garden and the metamorphosis of the estate into Mellon Park.

## GRANTS & AWARDS

### STATION SQUARE PRESERVATION PROGRAM

A Boost for Historic Preservation In Allegheny County

#### STATION SQUARE'S

##### SMALL PRESERVATION GRANTS

##### PRESERVATIONIST OF THE MONTH AWARD

Station Square is sponsoring two programs to promote historic preservation in Allegheny County

#### Small Preservation Grants Program

Grants ranging from \$50.00 to \$200.00 are available to neighborhood, preservation, and historical groups for specific preservation projects.

Just write a letter describing your project and send it to the address at the bottom of the flyer.

#### Preservationist of the Month Award

Each month Station Square will offer a special prize to the person who has contributed to historic preservation in his or her community.

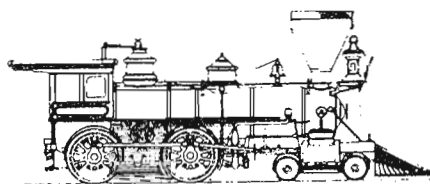
Prizes include:

Dinner series at the Grand Concourse  
Gift Certificates for the Freight House Shops and Restaurants

Just send us a letter describing your nomination for "Preservationist of the Month" to:

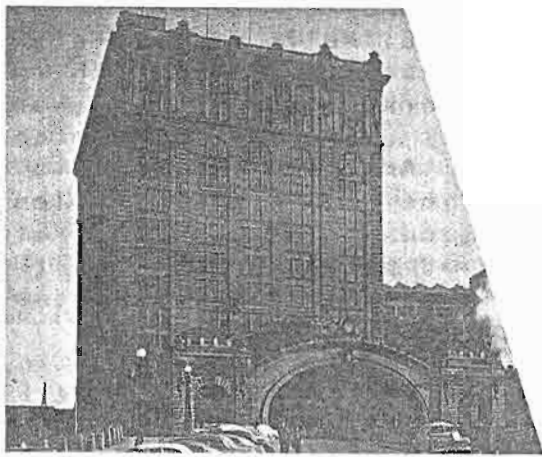
Station Square Preservation Awards  
One Landmarks Square  
Pittsburgh, PA 15212

For more information: call 322-1204



STATION SQUARE





The Pennsylvania Railroad Station remains a matter of great preservation concern to us and to many members of the Pittsburgh community, and it remains a planning concern for the City of Pittsburgh. Currently the building is owned by Conrail and is vacant. The Amtrack passenger terminal has been relocated behind the main terminal building.

For the Federal Railways Administration, the Allegheny Conference on Community Development, the Port Authority of Allegheny County, and the City of Pittsburgh Planning Department we have completed a study on the use of the building as an intermodal transportation and cultural center. Our findings for that use were generally negative.

We extended that study to examine the building for many other alternative purposes and acting on those findings, we sought to protect the building by offering to acquire or lease the building from Conrail. Our offer was submitted many months ago, but was rejected by Conrail which chose instead first to sell the building to a person who announced that he was going to strip the interior and sell the artifacts. The Mayor's office, PHLF, and Conrail opposed that effort; the buyer never produced the money so the deal never closed. Other offers have been made to buy it, but have not been acceptable to Conrail. A number of interested buyers wanted to convert the building to a hotel but the City has opposed that effort because they would like their Convention Center Hotel across the street to be built first.

Several months ago Conrail solicited public bids on the building but to date has made no announcement regarding the receipt or the disposition of those bids.

PHLF remains deeply concerned about the building. Listed on the National Register of Historic Places, it has certain protections under the law and we intend that they are enforced. Developers will not be able to demolish the building using any federal money in the process because they will not enjoy certain tax benefits if they do. Restoration, if federal money is involved or if accelerated depreciation is desired by the developer, must be meticulous.

In the meantime both the building and even more importantly the Rotunda deteriorate at a steady pace. Alarmed at the condition of the Rotunda over a decade ago, we attempted to interest the Pennsylvania Railroad in repairing it, and our studies since show that it is now severely endangered by the leaks in the roof and the deteriorating gutters and downspouts.

We expect the Pennsylvania Railroad Building to be one of our major preservation concerns- if not a crisis- in 1980.

## Old Post Office Receives Grant

The Old Post Office Museum recently received a grant of \$12,500 from the Institute of Museum Services, a Federal agency in the Department of Education.

A general operating support grant, it is the most valuable kind we can receive, since we can apply it at our own discretion towards our basic services--exhibitions, education, outreach programs, conservation, and security.

Out of 1,500 applications, only 405 were funded.

## CALENDAR OF EVENTS

October 1-5	Celebration of First Anniversary of Freight House Shops
October 6	8p.m. Duquesne Light Co. Lecture and Exhibit Preview at Old Post Office Museum Members free; non-mem. \$2.00
October 8-12	National Trust Convention New York City
October 11-12	Corn Husk Festival Meadowcroft Village
October 16	Antiques Show Preview Party
October 17-19	Antiques Show at Station Square Details on page 1
October 21-24	North East Museums Conference Pittsburgh Hyatt
October 28	8 p.m. Distinguished Lecturers in Preservation Series - Lecture by Mary Means of the National Trust for Historic Preservation at the Old Post Office Museum Members free; non-mem. \$2.00
November 8	2 p.m. Gallery Lecture at Old Post Office "The Dearly Lamented" by Mary Wohleber, and exhibit of her collection of tombstones Members free; non-mem. \$2.00
November 18	8 p.m. Distinguished Lecturers in Preservation Series - Lecture by Michael Ainsley, President of the National Trust Old Post Office Museum Members free; non-mem. \$2.00
December 1	Tree Trimming & decorating of Old Post Office for Christmas Volunteers welcome!
December 6	Ethnic Church Tour Leaves Old Post Office 1 p.m.
December 7	PHLF Christmas Party Details to follow

## Neville House Auxiliary News

The Neville House Auxiliary Fair held September 6,7 at this historic home on Route 50 outside Bridgeville, was a gala affair commemorating the completion of the exterior restoration and the launching of a new funding campaign to begin the interior restoration.

Auxiliary members worked through the winter, spring and summer months making crafts for the fair, drying herbs, putting up jellies and jams, and planning the day's activities. A very hearty committee of auxiliary members and their spouses literally took scrub buckets and brushes and attacked the house with a great vengeance to make ready for this event.

Our thanks is extended to everyone for their long hours of hard work, to Channel 4, WTAE for a beautiful promotional film on the house and the auxiliary, and to all those people who attended the event to help make it such a great success.

The auxiliary will have a booth at the PHLF Antiques Show selling crafts and other items of interest.

## Old St. Luke's Auxiliary News

Everyone was very pleased with the success of the Old St. Luke's Festival held on August 16.

The doll house was won by Edward Alderson who has already enclosed it in plexiglas and will present it to Children's Hospital.

There were \$870 in tickets sold on the doll house which was a delightful satisfaction to Mrs. Paul King who spent so many hours making all furnishings by hand.

The workers at Old St. Luke's wish to thank all who donated and worked for the success of festival. The proceeds were \$2,368.38.